

### ACHIEVEMENTS

- A cultural narrative is in place to support the detailed design of AMHU
- MAPU/EOA facility – structural frame in place in readiness for roof and wall cladding
- Large crane on site taking scaffolding and materials into SPIRE workspace
  - Extra resource secured for ASB/CSB Re-lifing project



MAPU/EOA structure up, and framing underway.



Scaffolding and materials for SPIRE craned in.



Cultural narrative for Acute Mental Health Unit developed.

### WHAKATAUKĪ

He toi whakairo, he mana tangata.  
Where there is artistic excellence there is human dignity.

*This whakataukī is attributed to a well-respected leader in Te Ao Māori the late Piri Sciascia Ngāti Kahungunu, Ngāti Raukawa, Rangitāne). The whakataukī denotes the importance of human expression through art and its connection to cultural identity and well being.*

## Medical Assessment Planning Unit and Emergency Department Observation Area Facility

This new facility is taking shape with the steel structure work complete. The framing and the roof and wall cladding are now going up. The team have worked through a deluge of rain, hail, thunder and lightning, but did manage to take a wonderful photo of the sunrise – see below.

Work on the corridor linking the building to the hospital continues and a doorway between this and the Emergency Department is being put in place.

Additional hours have been worked to keep on programme as the current winter bugs and COVID-19 hit staff.

The MAPU and EDOA teams continue to refine the new model of care for when they move into the new facility.



# SPIRE

Unlike the MAPU/EDOA project, the work being done to increase our peri-operative facilities isn't visible to staff and public but rest assured steady progress is being made. The endoscopy decontamination unit has been closed for a short period to allow work to occur in this area. Temporary arrangements are in place to ensure endoscopy services can continue.



*Scaffolding taking shape.*

On Wednesday 25 May the first load of scaffolding and materials for the roof work was craned in. The crane weighs in at 120 tonnes and has a reach of 60 metres. It made easy work of lifting the material up and over the loading bay and hospital corridor onto the roof or into the children's play area. The crane was back on 23 June and we will see it again. We thank staff for their patience while we restrict movement along corridors for safety during these times.



*Up, up and over.*

# Acute Mental Health Unit

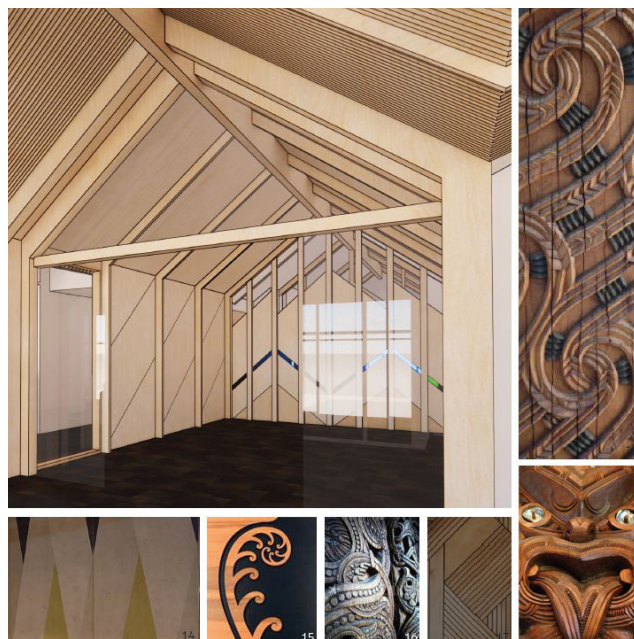
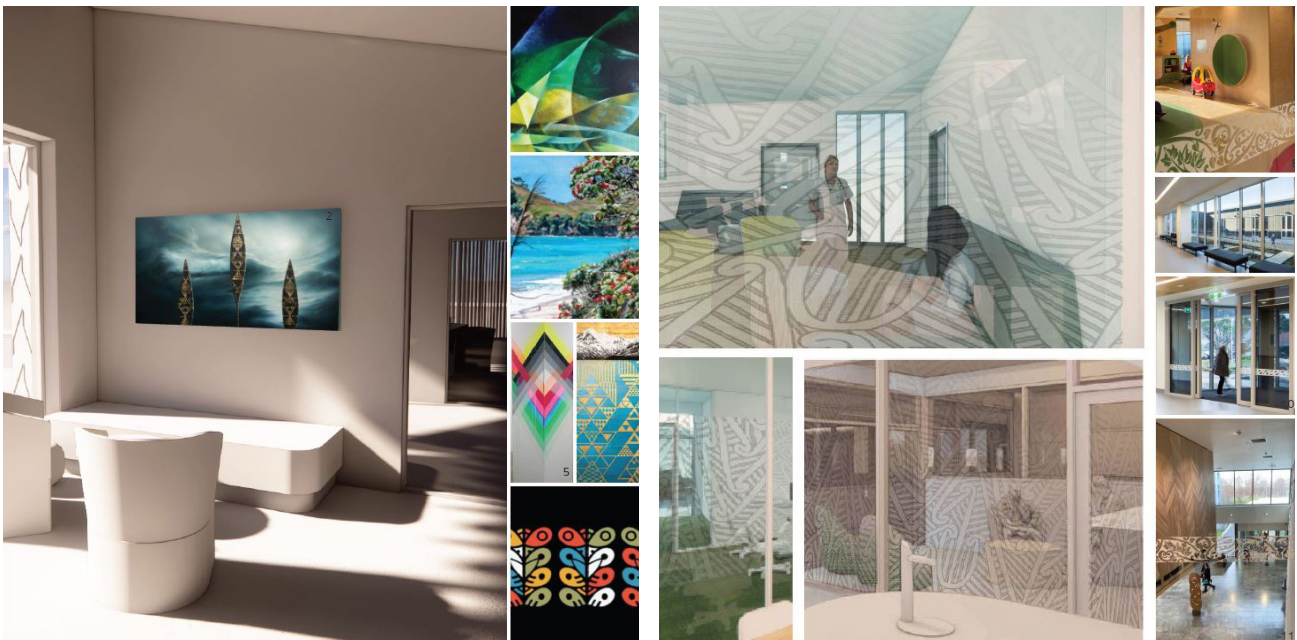
The last design phase for this project is well underway. The Detailed Design will provide the level of detail required for construction firms to price the building costs and submit a tender.

Te Wao-nui-a-Tane, which translates as “The Great Forest of Tane” has been agreed as the cultural narrative for the entire Unit. It reflects the ecosystem of integrated health benefits for whānau in Aotearoa. The concept recognises the cultural significance of life-giving properties associated with the forest and underpins the “tree of life” concept.

The cultural narrative through customised design aims to incorporate contemporary elements underpinned by traditional values. It draws on influence from the natural environment combined with integral cultural references finishes, and will extend to:

- *Ātea, external courtyard at the front of the building*
- *Internal courtyards and areas associated to each*
- *Whānau rooms*
- *Private entry external and internal at rear of facility*
- *Manifestations of artworks and cultural expression*
- *Wayfinding iconography, tones, textures and palette.*

It is planned that an artwork committee will be set up to support this project.



# Acute Services Block/ Re-living of Clinical Services Block

To assist with the development of a business case for this critical project, and to ensure all the supporting information and documents are developed on time, Beca has been engaged to provide programme advisory support. Beca will also ensure MDHB's efforts are aligned with the expectations of the organisation, Health NZ, the Ministry of Health, the Māori Health Authority, and other key stakeholders.

Beca is involved in similar projects with other DHBs. Karl Wilkinson of Beca will be the lead and his previous role was leading the Ministry of Health's Health Infrastructure Unit.

Paul Greatorax and Dr Richard Fong, from our Data Analytics team, continue to work with clinical leads and services on quantifying current and expected long term demand.

Key themes from feedback to date includes:

- *the impact of current facility constraints, staff shortages and bed shortages and COVID-19 on current throughput levels*
- *the difficulties in quantifying unmet demand*
- *the impact of limited access to theatre space*
- *the impact of the district's GP shortage.*

***"Our Place" keeps you informed of the strategic projects, interim solutions and the supporting infrastructure work being progressed to ensure Palmerston North Hospital is able to meet current and future demand.***

## Strategic

- Acute Services Block
- Reconfiguration of Clinical Services Block
- Mental Health Acute Facility
- Regional Cancer Facilities

## Interim

- SPIRE Project (Surgical and Peri-operative Capacity)
- ED and Acute Assessment Capacity (ED, EDOA & MAPU)
- ICU and Acute Care Capacity

## InfraStructure

- Electrical, heating, ventilation
- Three waters
- Medical gases
- Fire systems
- Thermal and emergency generation systems

***For more information on our capital projects at the hospital go to our new website [www.projects.mdhb.health.nz](http://www.projects.mdhb.health.nz) or by scanning the QR code.***



**Questions, feedback, thoughts –  
send them to [ourplace@midcentraldhb.govt.nz](mailto:ourplace@midcentraldhb.govt.nz)**