

Our Place | Ahu Taumatua

THE REDEVELOPMENT OF
PALMERSTON NORTH HOSPITAL

ISSUE 27 | JULY 2022

ACHIEVEMENTS

- The MAPU/EDOA unit is close to being fully enclosed
- The new endoscopy decontamination unit completed and in use
- First set of detailed design plans for the new mental health unit received for review
- Ward 27/MAPU now equipped as a COVID ward



MAPU/EDOA unit well underway.



Ward 27/MAPU fitted out as COVID ward.



SPIRE's new decontamination unit.

WHAKATAUKĪ

Ko Mākeremumu hūpē tautau
In winter the nasal discharge hangs suspended

Mākeremumu is a word that personifies winter or 'Takurua' and its effects on the human body such as the condensation that emits from a person's mouth when breathing in the cold air to the flow of mucous that occurs due to the cold.

This whakataukī can serve as a reminder for us all that when winter is drawing near to think about what we need to do to avoid the common winter ills and plan for things like getting vaccinated against the flu.

SPIRE



John Barnacott and Louise Robinson, Sterile Services with the new drying cabinets which provide stronger infection control measures and extend the life of scopes.

A key milestone was marked off this month with the completion of the decontamination unit within the Endoscopy Suite. This unit provides a critical service to the endoscopy and bowel screening service. The new unit has been set up on a new model, enabling pass through of dirty equipment through purpose-built windows. Another new feature of the unit is three drying cabinets – something which the hospital hasn't had before.



First the stainless-steel bench unit is built in.



Then the supporting outlets for the mediators (cleaning machines).



Then the sink and floor finishes.

For John Barnacott, the Sterile Services Team Leader, the new drying cabinets are a huge step forward, enabling more robust infection prevention measures.

“Microorganisms pose significant risk to endoscopes while in storage, and wet channels within the scopes promote microbial growth. The drying cabinets provide a validated and controlled environment with a constant supply of filtered medical air being passed through all channels of the scope while being stored after the decontamination process. This enables the endoscopes to be used straight from the cabinet, negating the need for reprocessing (up to 72 hours) prior to patient use.

“The drying cabinets are integrated with the Medivator scope processors and TDOC (the theatre instrument tracking system), enabling the scopes to be tracked if in the unlikely event recall was required.”

The decontamination unit itself is substantially larger than the previous unit. An additional Medivator endoscope reprocessor was also purchased as part of the SPIRE project – giving the Sterile Supply Team the ability to now process over 30 percent as many endoscopes.



Next, the medivators are installed, then the drying cabinets.

The next milestone will be the completion of Procedure Room 1 – the first of four procedure rooms. Work on this will continue through August with a view to commissioning the room in September. The target completion date for the new and expanded Day of Surgery Admissions and Recovery areas is November.

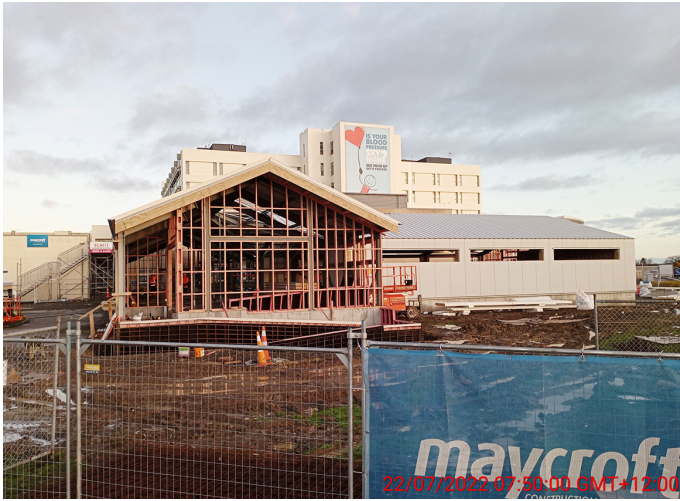
Medical Assessment Planning Unit and Emergency Department Observation Area Facility

This new facility will soon be totally enclosed, with the wall cladding, roof and windows installed. This is a major milestone, and one which will also be welcomed by the construction team as cold and wet weather takes hold. Once the building is enclosed the internal framing will go up.

The connecting corridor to the hospital and the ramp continues to be developed, and the erection of the Plant Room will soon begin. This will house the many services required, such as power, digital and data, heating and ventilation to name a few.



Roof completed.



Cladding in progress, with MAPU wing complete.



Link corridor to hospital under development.

Acute Services Block/ Re-lifing of Clinical Services Block

Before we get to building plans and design we need to know what services Palmerston North Regional Hospital will be required to deliver, and the models of care which will be used in the delivery of these.

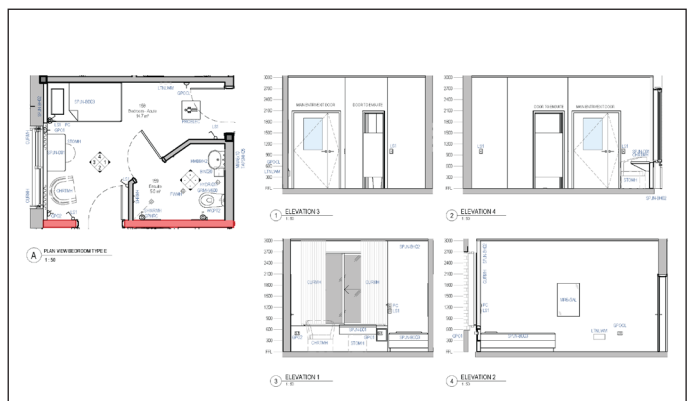
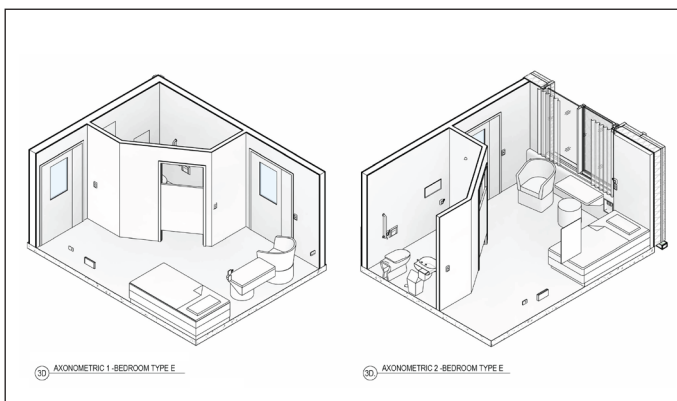
We are going to market in August to seek support in developing a Clinical Services Plan for the Regional Hospital. Coincidentally, the previous Clinical Services Plan was completed in August 2007. We will be setting up a working group to support and oversee this critical part of the project and will be calling on many members of the clinical team to participate.

Acute Mental Health Unit

The architects delivered the first drop of the Detailed Design plans this month and they are now being poured over by the User Groups to ensure the many, many details contained in these drawings and room data sheets are correct. This is a hugely important part of the design process and involves a lot of people and a lot of time.

The Detailed Design covers all aspects of the building, from the inbuilt furniture to the pipework and electrical services to fire zones. The design starts out with the overall plan and then provides detail for each area, then each room, then the furniture within. The details and location of doors and windows are specified and this approach is taken to all elements of the building, as well as for the services, such as power and heating and ventilation.

User Group members will go through these, ensuring they support the patient flow and model of care, checking every detail such as the type of doors and windows, the height of benches, the position of furniture and fittings, etc.



Layout of a bedroom.

Behind the Scenes

COVID Response

To assist in managing the COVID-19 surge currently being experienced, Ward 27 and MAPU are being modified as a COVID ward.

COVID-19 is an airborne virus so the critical component of our response from a facilities perspective is the cleaning and flow of air. In Ward 27/MAPU, this involved:

- Installing high volume air scrubbing systems throughout the ward
- Installing smaller air scrubbing units at each bedside
- Establishing a negative pressure zone with temporary fans at the bed lift end of the ward.
- Installing additional doors to control the air flow so as to prevent the spread of air borne viruses outside the ward area.

These measures will minimise the risk of transmission from infectious patients as much as possible. The air scrubbing units cleanse the air and remove aerosols which can carry the COVID-19 and other airborne viruses.

Rachael Timutimu and Carrie Naylor-Williams of the Integrated Operations Centre welcome the changes to the facility. For them, from an operational perspective, a second dedicated area for COVID cases makes it easier to manage the high demand on services, beds and staff.

There are two negative pressure rooms in most adult wards and until the second COVID ward was operational, the use of these was constantly reviewed in order to manage COVID patients. This caused disruption for everyone and more work. The dedicated 32 COVID beds in Ward 27/MAPU supports the hospital's COVID management plan.

Ward 24 will continue to care for patients with COVID who are acutely unwell and may require high flow oxygen.

Lower acuity and recovering COVID patients will be cared for in Ward 27/MAPU, where staff from these two units have joined forces, operating as one team.



Two sets of doors established in the corridor, with high volume air scrubber placed in area, to assist air control.



Suction unit in corridor, together with high volume air scrubber, creates negative pressure zone.



Small air scrubbers at each bedside.



High volume scrubbers throughout ward.

Medical Oxygen Upgrade Project

Rain, hail and shine, the Base Solutions team keeps working, digging trenches and laying the control cables, power cables and dual oxygen line needed to deliver medical oxygen from the yet to be installed bulk storage tank into the hospital. At the same time, they are also putting in the two ducts which will be required to provide electricity to the water tank farm to be established in the future. The roadway behind the boiler house is closed while this work is undertaken. It is estimated a further six weeks work is involved.

The new tank which was due to arrive in July has been delayed and will now be here toward the end of the year. Meantime, we can access additional emergency medical oxygen utilising the emergency connection installed in February this year.



Trenches made for the new medical oxygen pipework.



Inspection of work to date in progress.

Te Whatu Ora

Health New Zealand

Te Pae Hauora o Ruahine o Taranaki
MidCentral

“Our Place” keeps you informed of the strategic projects, interim solutions and the supporting infrastructure work being progressed to ensure Palmerston North Hospital is able to meet current and future demand.

Strategic

- Acute Services Block
- Reconfiguration of Clinical Services Block
- Mental Health Acute Facility
- Regional Cancer Facilities

Interim

- SPIRE Project (Surgical and Peri-operative Capacity)
- ED and Acute Assessment Capacity (ED, EDOA & MAPU)
- ICU and Acute Care Capacity

InfraStructure

- Electrical, heating, ventilation
- Three waters
- Medical gases
- Fire systems
- Thermal and emergency generation systems

For more information on our capital projects at the hospital go to our new website www.projects.mdhb.health.nz or by scanning the QR code.



Questions, feedback, thoughts –
send them to ourplace@midcentralthb.govt.nz