

ACHIEVEMENTS

- The MAPU/EDOA internal partitioning and joinery is going up
- New procedure rooms, Day of Surgery Admissions Unit and Recovery are taking shape
 - Clearance of Acute Mental Health Unit site underway
 - Minister of Health visits the site
 - Tenders for Clinical Service Plan sought



Internal framing of MAPU/EDOA underway.



Procedure rooms in new Gastroenterology area taking shape.



Final stages of the disassembly of Pullar Cottage, making way for the new Acute Mental Health Unit.

WHAKATAUKĪ

Ka tangi te pīpīwharaua, ko te karere a Mahuru
When the cuckoo cries, that is herald of spring

Mahuru is the fourth month of the Māori calendar that is associated with Spring. The cry of the pīpīwharaua is call to action for all hands-on deck to prepare the gardens for the upcoming season.

SPIRE

The first of Gastroenterology's four new procedure rooms will be constructed by the end of September, and will come into operation in early October. Procedure rooms 2 and 3 will follow, with the construction of these finishing in mid-November.

These procedure rooms are located in the new Gastroenterology area. The fourth procedure room will be located in the theatre suite. It will be fitted out for use as both a procedure room and an operating theatre. It is scheduled for completion later in the programme (June 2023).

The new Day of Surgery Unit being developed in the area formerly occupied by Renal Services, will be fully constructed by the end of September, with the recovery area to follow. The recovery area extends into the areas formerly used by the Clinical Library and Clinical Lecture Theatre. This construction work will be finished by late October. It is planned that the two areas will go live mid-November.

Work on the roof top area and plant room continues.

There has been a lot of publicity around the supply of gip. We are pleased to report that we have secured sufficient stock for both this project, and the establishment of MAPU/EDOA.



From left to right:

- 1. Procedure room 1 under construction.*
- 2. New recovery unit being developed.*
- 3. Work continues in the Day of Surgery Admissions area (DOSA).*
- 4. Staff write-up bay in DOSA.*

Medical Assessment Planning Unit and Emergency Department Observation Area Facility

As the photos below show, the construction of this building is motoring ahead.

It is very close to enclosed, with the roof, wall, windows and doors installation nearly finished

Services to it are being connected, including water, sewer and electricity.

Within the ceiling space, the plant room is being fitted out. Heating and ventilation equipment is being installed, as well as electrical and communication cabinets.

The connecting corridor to the hospital and the ramp are both taking shape.

The MAPU team, led by Charge Nurse Debbie Perry, is preparing for the shift. They appreciated the recent opportunity to see a mock-up of the above bed panels. This is where all the healthcare services are delivered, including medical oxygen, medical gas, power, call bells, suction, telcon monitors, storage for blood pressure cuffs, and bedside power. This needs to be practical and a lot of work has gone into its design which also includes a place for the nurse to write notes.



Inside starting to take shape.



Exterior nearly closed in



*MAPU team looking around the new MAPU/EDOA facility.
Left to right: Kellie Stickney, Tracy Hunter, April Vervoort, Renee Mathieson, Debbie Perry and Camille Zarate.*

*Pictured:
The connecting corridor takes shape;
what a difference a month makes.*



July 2022



August 2022

Focus on the Acute Services Block/Re-lifing of Clinical Services Block

The Minister of Health, the Hon Andrew Little and local MP, Tangi Utikere spent an hour at MidCentral on 18 August and were briefed on the condition, and demand on, current facilities, and the need for new hospital facilities on our campus.

They walked through the ICU, Theatre and Emergency Department, meeting with lead clinicians and operational staff, hearing about the constraints our current building imposes on the day-to-day delivery of care.

The Ministerial party had the opportunity to walk through the MAPU/EDOA facility. They heard about how this will help relieve pressure on critical assessment services in the short term while the design and construction of the new Acute Services Block takes place. The site tour concluded with viewing and examination of the proposed site for a new Acute Services Block.

Ian Grant of Health New Zealand's Infrastructure and Investment Group also visited MidCentral. Ian is part of HNZ's Regional Hospital Improvement Programme and is working with us on a business case for the establishment of an Acute Services Block and the re-lifing of the current Clinical Services Block.

A Clinical Services Plan is key to designing both the new and upgraded facilities. We have sought tenders from seven organisations to lead the development of this Plan, working closely with local clinicians. Tenders close in early September.

In parallel with this work, a Central Region Clinical Services Plan is also being developed. The two will be closely aligned.



Ministerial party visits ED.

Acute Mental Health Unit

While the detailed design for this unit is being finalised and the main contract tendered, the building site is being cleared. Pullar Cottage, which was used for doctors' accommodation, had to be removed. It was rather more than a cottage as it had been added to several times. The original building was in a poor condition, ruling out relocation. However, it had some lovely matai flooring, doors, window frames and weatherboards so a deconstruction approach has been taken by Central Demolition, who are doing this work. All those items were carefully removed for re-use. The buildings concrete steps and foundations have also been taken away for recycling and will be used in roading projects. All in all, around 70% of the building will be recycled.



Deconstruction of Pullar Cottage commences.



The last part of the building awaits disassembly.

Intensive Care Unit

The ICU area will be the next short term, interim project to get underway. It is intended that more beds and clinical space be provided.

To enable this to happen, the Cluster Hub (behind the hospital kitchen) is being made available for anaesthetist office space. The hospital management team who have occupied this area are moving to other areas throughout the hospital.

Behind the Scenes

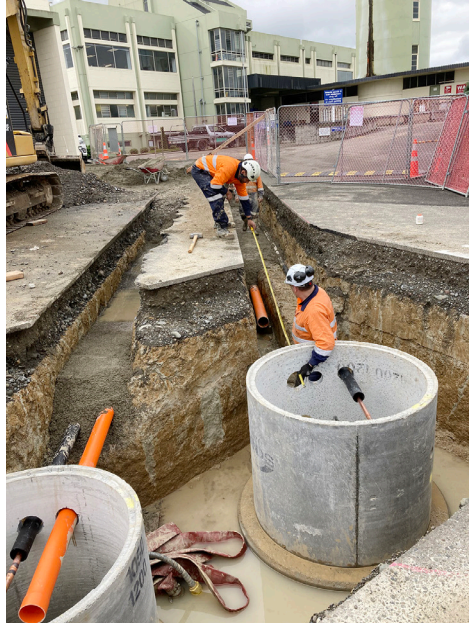
Medical Oxygen Upgrade Project

This project continues to make good progress and is on track for completion by November 2022.

The ground works have created a lot of attention for those who work around this area, particularly the depth of the channels being created and the large concrete structures.

The concrete structures are in fact pits. Pipe work, cables and ducts, for both this project and the planned water farm, will go through these, and controls will be housed within them. It is within the pits that directional changes of the pipework will occur. It is within the pits that direction changes of the pipework will occur – see photo left.

These have now been completed and covered – see photo right.



Te Whatu Ora

Health New Zealand

Te Pae Hauora o Ruahine o Taranaki
MidCentral

“Our Place” keeps you informed of the strategic projects, interim solutions and the supporting infrastructure work being progressed to ensure Palmerston North Hospital is able to meet current and future demand.

Strategic

- Acute Services Block
- Reconfiguration of Clinical Services Block
- Mental Health Acute Facility
- Regional Cancer Facilities

Interim

- SPIRE Project (Surgical and Peri-operative Capacity)
- ED and Acute Assessment Capacity (ED, EDOA & MAPU)
- ICU and Acute Care Capacity

InfraStructure

- Electrical, heating, ventilation
- Three waters
- Medical gases
- Fire systems
- Thermal and emergency generation systems

For more information on our capital projects at the hospital go to our new website www.projects.mdhb.health.nz or by scanning the QR code.



Questions, feedback, thoughts –
send them to ourplace@midcentralthb.govt.nz