

Our Place | Ahu Taumatua

**THE REDEVELOPMENT OF
PALMERSTON NORTH HOSPITAL**

ISSUE 29 | SEPTEMBER 2022

ACHIEVEMENTS

- The detailed design for the Acute Mental Health Unit was completed, and is now going through the approval process.
- Construction of Procedure Room 1 was completed and this will go into use in early October.
- Construction of the MAPU/EDOA facility continues and is on track for completion this year.
 - Tenders for a company to work with us to develop a Clinical Services Plan were received and an appointment is pending.



The first of four procedure rooms is now fully constructed.



Interior walls and in-ceiling plant room in the new MAPU/EDOA facility are being erected.



Site now cleared for the new Acute Mental Health Unit.

WHAKATAUKĪ

**Tūngia te ururoa kia tupu whakaritorito te tupu o te harakeke –
Clear the undergrowth so that the new shoots of the flax will grow.**

This whakataukī speaks to change and challenges us to be diverse and flexible with new beginnings!

SPIRE

Another major milestone was chalked up this month, with the construction of Procedure Room 1. This is the first of four procedure rooms, and it was handed over by the construction team to the Gastroenterology Service in late September.

The Service is aiming for the room to be in use from 7 October. Between now and then, the room will be stocked, clinical equipment installed and commissioned, and staff oriented to the new room.

The next milestone will be the completion of the Day of Surgery Admission Unit and Recovery by the end of October.



Procedure Room 1 fully constructed.



Theatre pendant in place. This is capable of being moved around the theatre bed and provides many services. This end is where the anaesthetic monitors are linked in.



The theatre lights being installed. At the front, right side you can see the theatre pendant in a vertical position, with the vertical side facing.



The Neptune machine and docking station being installed. This is a closed waste management system that collects, transports and disposes of surgical waste fluids.

19/09/22

Medical Assessment Planning Unit and Emergency Department Observation Area Facility

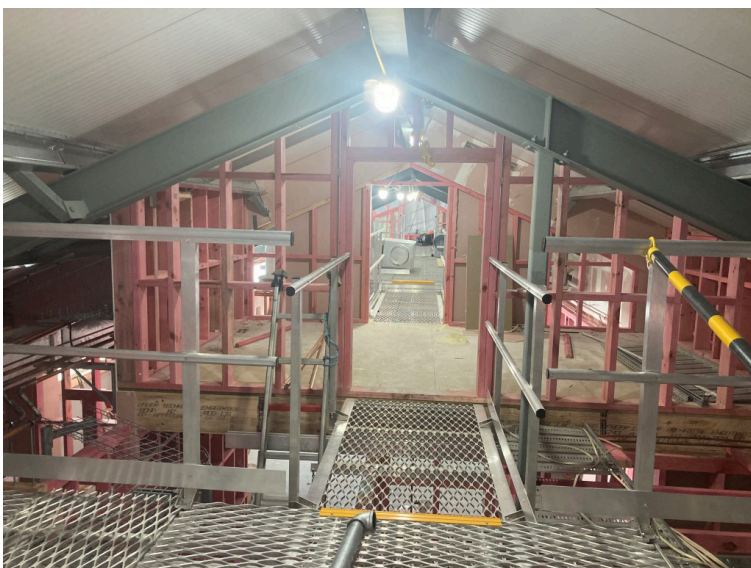
This building is now water tight, with all doors and windows fitted and the wall cladding and roofing in place.

Fast work is being made of framing up the interior and gibbing the walls.

The plant room located in the ceiling space is also well advanced, with the flooring and access walkways installed. Cable trays are also being installed.

Fire protection systems are being put in place, including the creation of fire cells to support a staged evacuation should this be required.

The car parking area in front of the building is nearing completion.



Focus on the Acute Services Block/Re-living of Clinical Services Block

The development of a Clinical Services Plan for the district is critical to define the requirements of Palmerston North Regional Hospital. This will inform the requirements for the new Acute Services Block and the re-living of the current Clinical Services Block.

The Clinical Services Plan will be linked to national and regional clinical service plans, and will take an integrated care approach, including primary/community, regional and tertiary services. It will determine what services are required given the health status of our wider area, and will then look at how these services should be provided, by whom and from where. It will have a strong focus on equity, as well as a focus on keeping whānau and communities well and out of hospitals, and ensuring people receive care closer to home. The impacts of technology and advances in models of care will be canvassed, as well as benchmarked ratios of services to population, and workforce changes.

Tenders have been received to assist with this critical work and a small team, including senior clinicians, is currently completing their evaluation of the tenders, with an appointment imminent.

Acute Mental Health Unit

The final stage of the design process is the Detailed Design. This has been completed and is now going through the formal approval process, including clinical sign-off, building and engineering services sign-off, and finally Steering Committee approval. Concurrent with this, the design is being costed by the Quantity Surveyor.

The selection of a main contractor to construct the new facility is also in the final stages and an appointment is expected to be made in October.

The deconstruction of Pullar Cottage has been completed, and that part of the building site is now clear.

The next piece of site works is removing trees. Planning for this has been done in conjunction with Pae Ora and local Iwi. It is planned that as many trees as possible will be transferred to other areas of the campus, and Rangitāne Iwi will then relocate as many of the remaining trees as it can. The large Totora trees cannot be transferred and the timber from these will go to Rangitāne and be used for carvings. It may be that some carvings will form part of the new facility.



Site being cleared for the new Acute Mental Health Unit.

Following a formal blessing, work will get underway shortly.



Site now cleared for the new Acute Mental Health Unit.

Te Whatu Ora

Health New Zealand

Te Pae Hauora o Ruahine o Taranaki
MidCentral

“Our Place” keeps you informed of the strategic projects, interim solutions and the supporting infrastructure work being progressed to ensure Palmerston North Hospital is able to meet current and future demand.

Strategic

- Acute Services Block
- Reconfiguration of Clinical Services Block
- Mental Health Acute Facility
- Regional Cancer Facilities

Interim

- SPIRE Project (Surgical and Peri-operative Capacity)
- ED and Acute Assessment Capacity (ED, EDOA & MAPU)
- ICU and Acute Care Capacity

InfraStructure

- Electrical, heating, ventilation
- Three waters
- Medical gases
- Fire systems
- Thermal and emergency generation systems

For more information on our capital projects at the hospital go to our new website www.projects.mdhb.health.nz or by scanning the QR code.



Questions, feedback, thoughts –
send them to ourplace@midcentralthb.govt.nz