

# Our Place | Ahu Taumatua

THE REDEVELOPMENT OF  
PALMERSTON NORTH HOSPITAL

ISSUE 30 | OCTOBER 2022

## ACHIEVEMENTS

- SPIRE is progressing, and work on the roof area has commenced
- SPIRE Stage 1 (DOSA, Recovery and Gastroenterology) on track for completion this year
  - The fit-out of the MAPU/EDOA facility is well underway



*Sunshades coming down to make way for SPIRE and COVID-19 air conditioning work.*



*Construction of DOSA, Recovery and Gastroenterology areas continues with a December 2022 completion date.*



*MAPU/EDOA facility will be completed late December.*

## WHAKATAUKĪ

Kaua e rangiruatia te hāpai o te hoe; e kore tō tātou waka e ū ki uta –  
Do not lift the paddle out of unison or our canoe will never reach the shore.

*This whakataukī is about teamwork and signifies the importance of everyone working together to succeed in a joint project. Source: Ngā Pepeha a ngā Tipuna.*

# Progress Update | OCTOBER 2022

## SPIRE

Work on the new Day of Surgery Admission and Recovery areas continues. Delays have been experienced and the area is now expected to be in operation on 12 December, with construction completed on 28 November.

On 16 December, procedure rooms 2 and 3 are scheduled to be in use. This means the Gastroenterology Service can move into their upgraded and expanded area. The service has been operating from different areas of the hospital for over a year now and are looking forward to being back together again.

The project team had the opportunity to view progress recently.



*Day of surgery and recovery area painted and vinyl ready for laying.*



*Panels for bed heads in place, with electrical and other services in place.*



*A DOSA/Recovery nurses' station.*



*Former renal nurses' station gets new cabinetry for DOSA/Recovery nurses' station.*



*A procedure room.*



*Staff tea and meeting room.*



*Charge nurses office currently in use as the construction site office.*

Work on repairing the roof and installing the roof-top plant roof is underway. This is being done in conjunction with work to establish Ward 26 as a COVID-19 treatment ward. Duct work and HEPA filters will be installed, as well as the air conditioning required for the new theatre area.

More equipment for this work was lifted in by crane during the month.



13/10/22 3:10:04 pm NZDT

The concrete sunshades on one side of the clinical services block had to be removed and this work started in mid-October and was finished by the end of the month. A tent is being installed on the roof to enable the remedial work to occur and this is on track for being in place on 7 December. It is recognised that the work will be noisy and the project is working closely with hospital services to manage this, and maintain patient privacy and comfort, as best as possible.



*Scaffolding and gear in place.*



*Sunshade secured.*



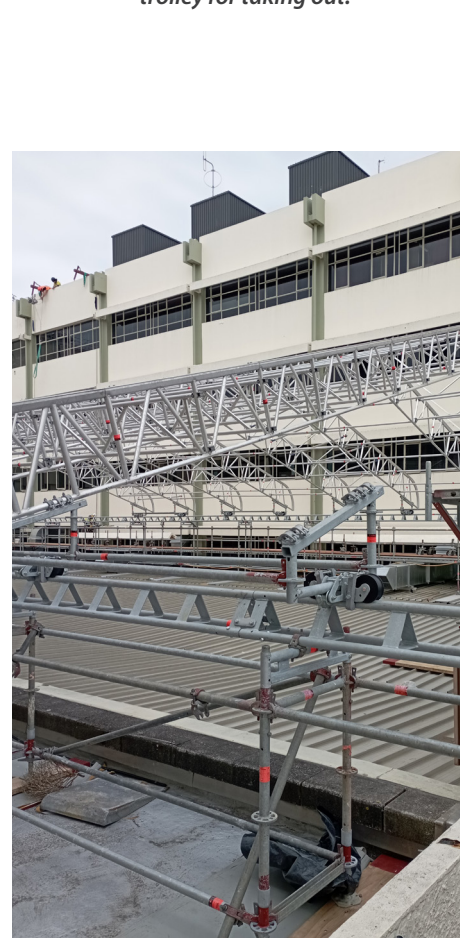
*First sunshade placed onto trolley for taking out.*



*Scaffolders secure next sunshade for removal.*



*Half the sunshades removed.*



*Scaffolding for roof tent being assembled.*

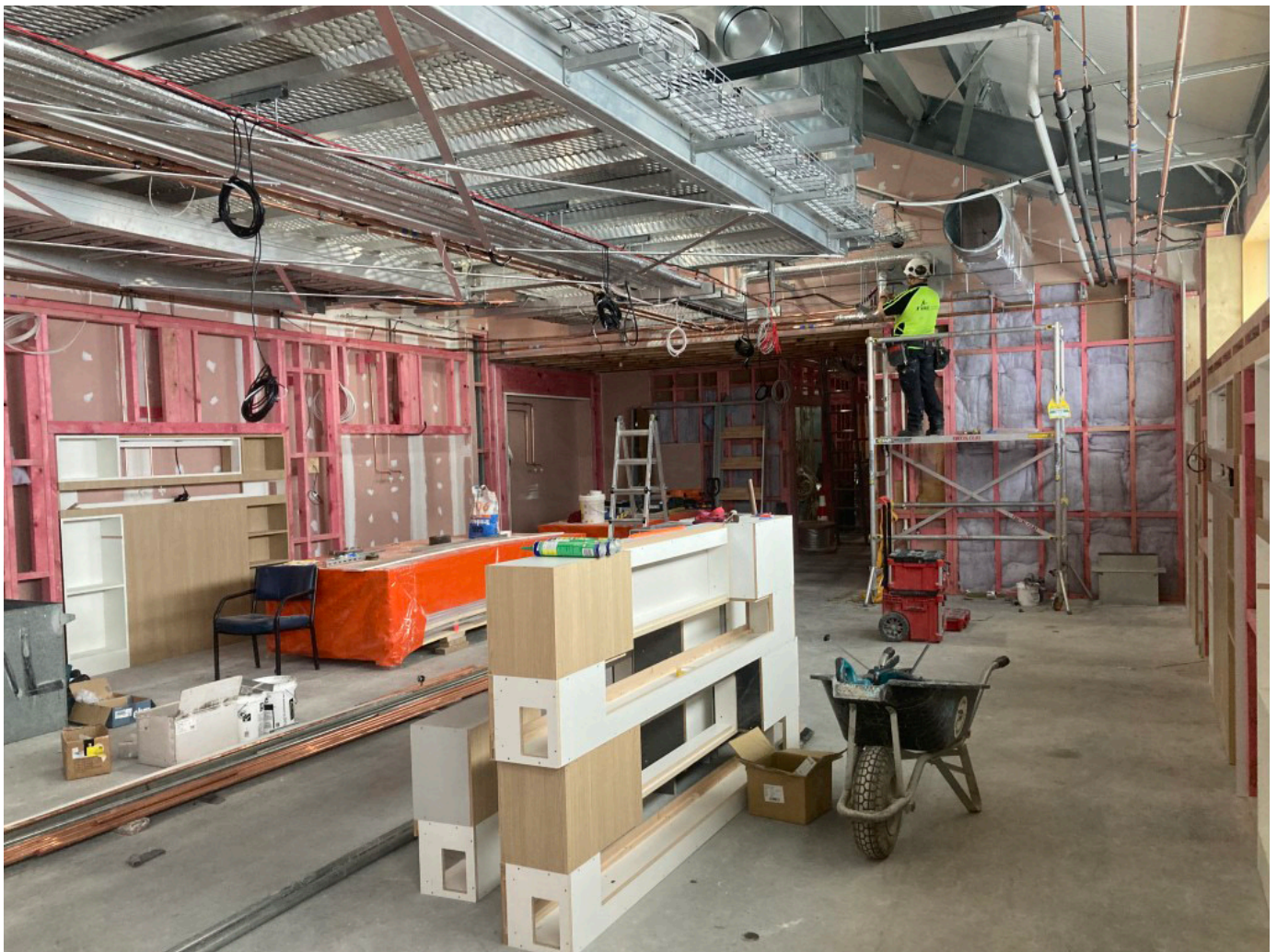
## Medical Assessment Planning Unit and Emergency Department Observation Area Facility

Construction of this new facility continues and is scheduled for completion this year.

As the photos show, the MAPU wing is taking shape, with the bed panels going in.

The white shelves on the right are for patient use, with those on the left and at the top for clinical services and equipment and nursing use. The architect worked closely with our nurses on the design so it will be functional and practical.

Planning for the big move is underway and will occur over the New Year, with the MAPU and EDOA teams operating from their new facility mid-January 2023. Arrangements are being finalised for the clean and fit-out of the area, and installation of equipment, with Ventia, Digital Services, Clinical Engineering and vendors.



*One bed space in place, and another ready for installation.*



*A view from above.*



*The bed panel.*



*The plant room is taking shape.*

## Acute Mental Health Unit



We welcome the team of LT McGuinness who has been selected as the lead firm for the construction of our new Acute Mental Health Unit. They were on campus recently, undertaking the first site inspection.

LT McGuinness is a third-generation family construction company which has been operating since 1950.

They are Wellington based, with offices in the capital city and Auckland.

We look forward to working with them on the construction of our new facility.

# Focus on the Acute Services Block/Re-lifing of Clinical Services Block



Last month we said we were seeking a firm to work with us to develop a Clinical Services Plan – a fundamental document which will inform what facilities are required.

We are pleased to advise Synergia has been appointed and will commence in early November. They have a strong clinical team and are partnering with Te Tihi, a local alliance of nine Iwi, Hapū and Māori organisations.

We will bring you more news about this in the next edition once Synergia is on site.

## Te Whatu Ora

Health New Zealand

Te Pae Hauora o Ruahine o Taranaki  
MidCentral

*“Our Place” keeps you informed of the strategic projects, interim solutions and the supporting infrastructure work being progressed to ensure Palmerston North Hospital is able to meet current and future demand.*

### Strategic

- Acute Services Block
- Reconfiguration of Clinical Services Block
- Mental Health Acute Facility
- Regional Cancer Facilities

### Interim

- SPIRE Project (Surgical and Peri-operative Capacity)
- ED and Acute Assessment Capacity (ED, EDOA & MAPU)
- ICU and Acute Care Capacity

### InfraStructure

- Electrical, heating, ventilation
- Three waters
- Medical gases
- Fire systems
- Thermal and emergency generation systems

For more information on our capital projects at the hospital go to our new website [www.projects.mdhb.health.nz](http://www.projects.mdhb.health.nz) or by scanning the QR code.



Questions, feedback, thoughts –  
send them to [ourplace@midcentralthb.govt.nz](mailto:ourplace@midcentralthb.govt.nz)