

# Our Place | Ahu Taumatua

## THE REDEVELOPMENT OF PALMERSTON NORTH HOSPITAL

ISSUE 32 | JANUARY 2023

### MAJOR MILESTONES ACHIEVED

Construction of our new MAPU/EDOA facility is complete, and MAPU is now operating from it. Work on SPIRE Stage 2 commenced on 4 January 2023.

SPIRE Stage 1 is largely complete:

- The new Gastroenterology Service suite, with three procedure rooms, opened on 26 January 2023.
- The new Day of Surgery Admission Area opened on 4 January 2023.
- The Recovery team will move to their new area in two stages – 30 January and 7 February.
- The final piece, the staff area, will be operational from 10 February.



*New DOSA/Recovery Area.*



*Demolition of old DOSA area underway.*



*EDOA area with the new MAPU/EDOA Unit.*

### WHAKATAUKĪ





**Mā whero mā pango ka oti ai te mahi**  
***With red and black the work will be complete***

This refers to co-operation where if everyone does their part, the work will be complete. The colours refer to the traditional kōwhaiwhai patterns on the inside of the meeting houses.

Source: [www.maori.cl/Proverbs.htm](http://www.maori.cl/Proverbs.htm)

## MAPU / EDOA

### KEY MILESTONES

2020		2021		
JANUARY	JUNE	JULY	OCTOBER	NOVEMBER
 <p>Project commenced</p>	 <p>Business case approved by Board</p>	 <p>Detailed design, Stage 1 (foundation and civil works) completed</p>	<p>Detailed design, Stage 2 (building) completed Contractor appointed Building zone cordoned off and buildings sheds moved on site</p>	 <p>Construction site blessed Construction commenced – ground-breaking</p>

2022					2023
MARCH	MAY	JULY	SEPTEMBER	DECEMBER	JANUARY
 <p>12 new accessibility car parks opened</p>	 <p>Foundation laid – Building commenced</p>	 <p>Roof completed</p>	 <p>Building enclosed</p>	 <p>Blessing</p>	 <p>Completed and opened</p>

### THE JOURNEY

The journey has taken nearly three years, from concept to delivery. It has had its challenges, with COVID-19, supply chain constraints, fiercely wet weather, and rising costs.

It began back in early 2020 and was championed by Lyn Horgan and Neil Wanden – our Chief Operating Officer and General Manager, Finance & Corporate Services respectively.

The need to position MAPU alongside ED and provide greater co-ordination and collaboration of our acute triage and assessment service was long recognised. However, the pressure these services were facing meant an interim solution was required while plans for a new Acute Services Block were progressed.

In March 2020, a business case for a 30-bed unit (20 MAPU beds and 10 EDOA beds) began and was approved by the Board in June that year. Work on the detailed design for this facility then began in earnest. There were many iterations as services and designers worked through the detail. This included the unseen but critically important utility and other services needed to operate the building – power, medical gas, air conditioning, digital and tele-communication, structural, and other mechanical systems. The design changed throughout the process from a “pod” to a “modular” design.

The process took time and in order to expedite the construction phase, it was split into two parts, being the foundation and the building.

In mid-2021 the engagement of a main contractor to construct the facility began, with Maycroft Construction appointed that October.

Before construction commenced in November 2021, the site was blessed. The turning of the first sod was celebrated and we all watched with interest as the earthworks got underway in earnest.

The foundations of any project are critical and this work took up the first 6–7 months of construction. In May 2021 the foundation slab was in place and the framework went up and building began to take shape

By September, the building was closed and inside the partitions were going up and the engineering, mechanical and digital teams were installing their systems in the plant room.

The construction and fit-out of the building and plant room took thousands of manhours and a wide range of trades.

Meanwhile the MAPU and EDOA teams were planning and preparing for their move into the new facility, including working through and documenting the new models of care which would be needed. Clinical and other equipment was organised and decanting plans prepared.

As the end of 2022 drew to a close, the construction work was all but complete and the Services had arrangements in place for go-live.

On Wednesday, 25 January admissions to the old MAPU area ceased and the team transitioned to the new area. EDOA will move in later this year, with its new area being used by Ward 27 in the meantime while the hospital progresses its COVID-19 response.



## THANK YOU FOR YOUR FEEDBACK

*"I love our new unit. After working upstairs for over seven years, this feels like a fresh start which gives us additional motivation to work together and improve our ways together as a team for the ultimate benefit of our patients."*  
– Camille, ACN

*"Great unit, very spacious, good facilities and great to have more telemetry beds. Patients really like it here."*  
– Stuart, Cardio Registrar

*"Very grateful for the seamless transition. Great work team, this is proof that you deserve the Team of the Year award."*  
– Sue, Receptionist

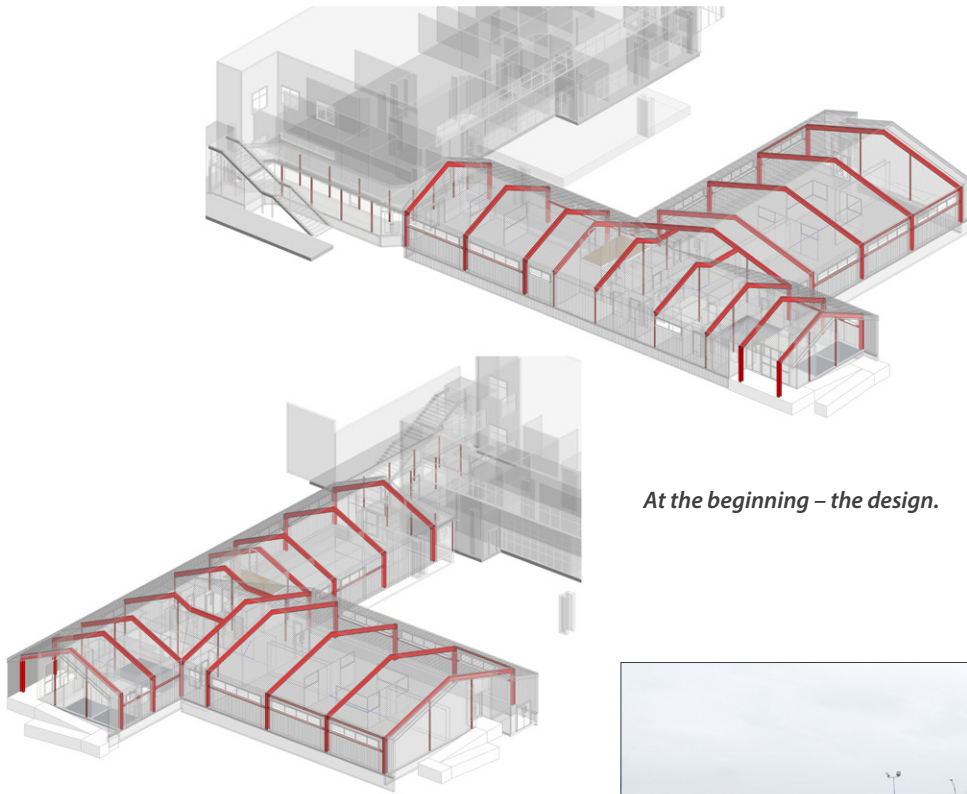
*"Nice and clean, beautiful space for our patients."*  
– Skyla, NETP

*"It is so much nicer. Lots of new equipment so more learning."*  
– Emilee, Nursing Student

*"Its a clean, open space. Exciting to see."*  
– Carol, RN MAPU RN for over 10 years

*"Its a nice big open space and its a very functional space."*  
– Ellen, RN

# PICTORIAL TIMELINE



*At the beginning – the design.*



14/12/2021 16:28:34 GMT+13:00

*November 2021: Site works commence.*



09/05/2022 15:13:59 GMT+12:00

*May 2022: Foundation complete.*



23/05/2022 16:13:49 GMT+12:00

*May 2022: Framing going up.*



July 2022 – Roof goes on.



September 2022: Building enclosed, and internal framing commences. The outside nearly complete despite the weather.



*October 2022: The MAPU team checks out progress. Bed panels in place.*



*November 2022: Finishing trades underway and outdoor pathway framed up.*



*December 2022: Services connected.*

JANUARY 2023



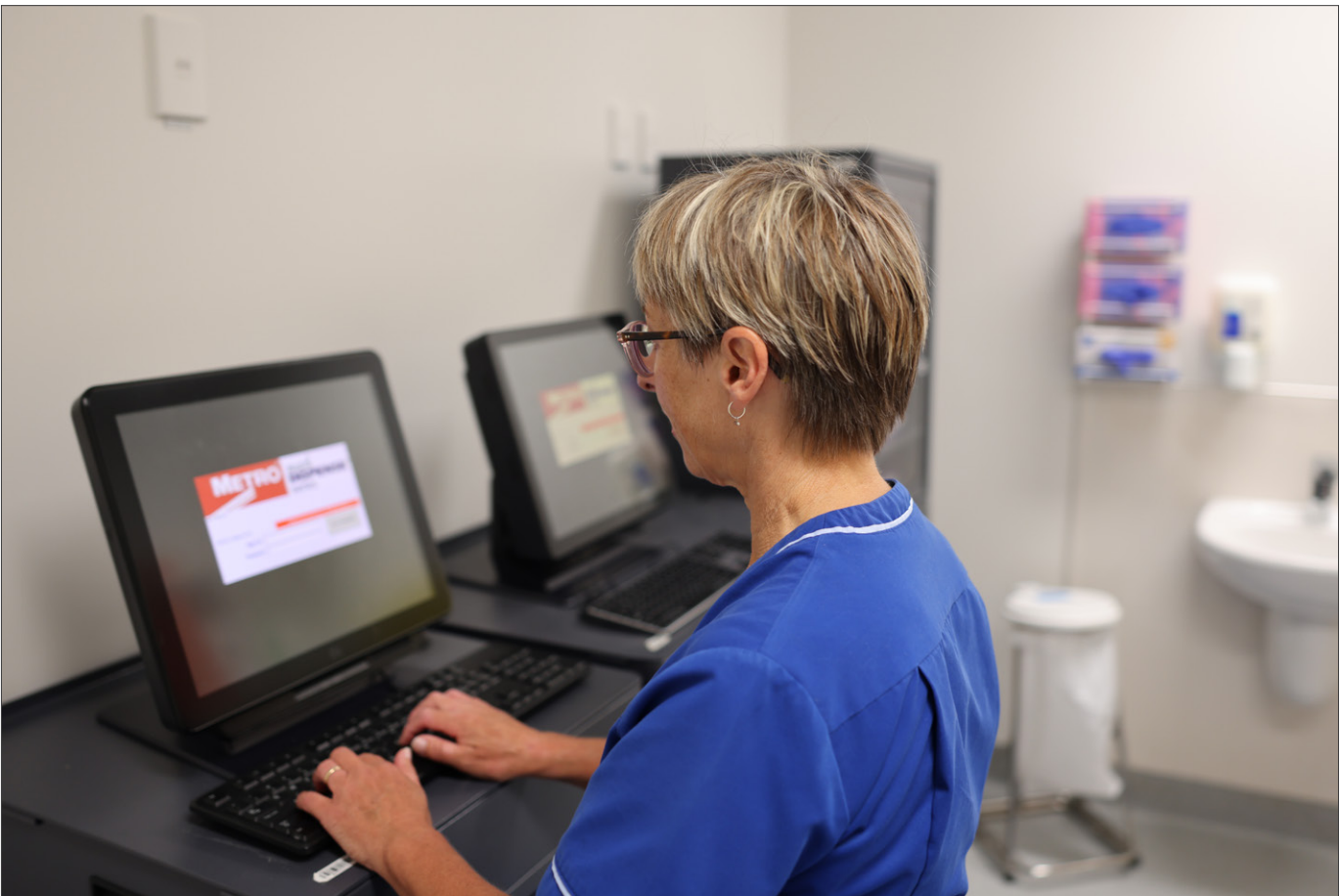
MAPU.



Multi-disciplinary room includes a computer-on-wheels.



*Clean utility room.*



*Med Dispense Room.*





*Consultation/Whānau Room.*



*MAPU Charge Nurse Debbie Perry at the nurses' station.*



*Orienting to the new work area.*



*Staff Room.*

# THE DESIGN AND CONSTRUCTION TEAM

*Our thanks to the great team of consultants and trades who have delivered this project for us.*

## CONSULTANTS

Architect & Project Manager	<i>WSP New Zealand Ltd</i>
Civil & Structural Engineer	<i>Vert-X Structural Engineering Consultants</i>
Electrical & Data Engineer	<i>Cosgroves</i>
Fire Engineer	<i>Holmes</i>
Hydraulic, Mechanical & Medical Gas Services Engineer	<i>Meredith Solutions Ltd</i>
Land Surveyor	<i>Pirie Consultants Ltd</i>
Project Quantity Surveyor	<i>Rider Levett Bucknall</i>

## MAIN CONTRACTOR

Main Contractor	<i>Maycroft Construction Ltd</i>
-----------------	----------------------------------

## SUBCONTRACTORS & SUPPLIERS

Aluminium Louvres	<i>Insol Ltd</i>
Curtain Track Supply (Shower & Medical)	<i>Tetral Industries 2020 Ltd</i>
Data & Communications	<i>TelcoSpec Ltd</i>
Door Supply (Cavity Slider)	<i>Cavity Sliders Ltd T/A CS for Doors Ltd</i>
Door Supply (General)	<i>Pacific Door Systems Ltd</i>
Door Supply (Sliding Fire Door)	<i>Ulti Group Ltd</i>
Electrical Services & Emergency Lighting	<i>Max Tarr Commercial Ltd</i>
Electrical Services Mechanical	<i>Greaves Electrical Services Ltd</i>
Excavation & Siteworks	<i>Williams Contracting (Manawatu) Ltd</i>
Fall Restraint	<i>PBI Height Safety Ltd</i>
Fire Protection Services	<i>Alliance Fire &amp; Security Ltd</i>
Floor Coverings	<i>Carpet Court Palmerston North</i>
Glazing	<i>Metropolitan Glass and Glazing Ltd</i>
Hardware Supply	<i>ARA Hardware LP</i>
Joinery	<i>Stephen Jensen Cabinetmakers Ltd</i>
Landscaping & Retaining Wall	<i>Creative Landscapes PN Ltd</i>
Mechanical & Medical Gas Services	<i>Air Dynamics</i>
Metal Windows & Doors	<i>Wight Aluminium Ltd</i>
Metalwork	<i>Mike Christie Sheetmetals Ltd</i>
Nurse Call	<i>Security Installation Services Ltd</i>
Painting	<i>Gary Dyer Painter &amp; Decorators Ltd</i>
Passive Fire Protection	<i>Fire Engineering Services Ltd</i>
Plasterboard Linings & Stopping	<i>Fixstop Interiors Ltd</i>
Plumbing & Drainage	<i>Air Conditioning &amp; Plumbing Ltd</i>
Reinforcing Steel	<i>Fletcher Reinforcing Ltd</i>
Roadmarking	<i>Roadmarking Services Ltd</i>
Roof Platform, Walkways & Stairs	<i>Monkey Toe Group Ltd</i>
Roofing & Wall Cladding (Insulated)	<i>F &amp; R Insulation Panels (2020) Ltd</i>
Roof & Wall Cladding (Metal)	<i>McCreery Roofing Ltd</i>
Security Services	<i>Waterford Security Ltd</i>
Seismic Joints Supply	<i>Seismic Guys Ltd</i>
Solid Plaster	<i>Central Plastering Ltd</i>
Structural Steelwork	<i>Stevensons Structural Engineers (1978) Ltd</i>
Suspended Ceilings	<i>Elite Ceilings &amp; Partitions Ltd</i>
Wall Protection	<i>Zone Direct (2016) Ltd</i>
Window Manifestations	<i>Capture Signs Ltd</i>

## SPIRE

On January 4th the new Day of Surgery Admission Unit opened and Maycroft's construction team moved into its former area to commence work on the project second stage, being the establishment of two additional theatres and a cath lab.

On January 26/27, the new Gastroenterology Service moved into its new suite, complete with three new procedure rooms and a new decontamination unit. For the past 14 months the Service has been working from various locations while the new suite was constructed and are delighted to be back together.

The Recovery team will move into their new area in early February. The last part of Stage 1 is the staff area, including office space, staff room, meeting room, etc, and will be occupied mid February.

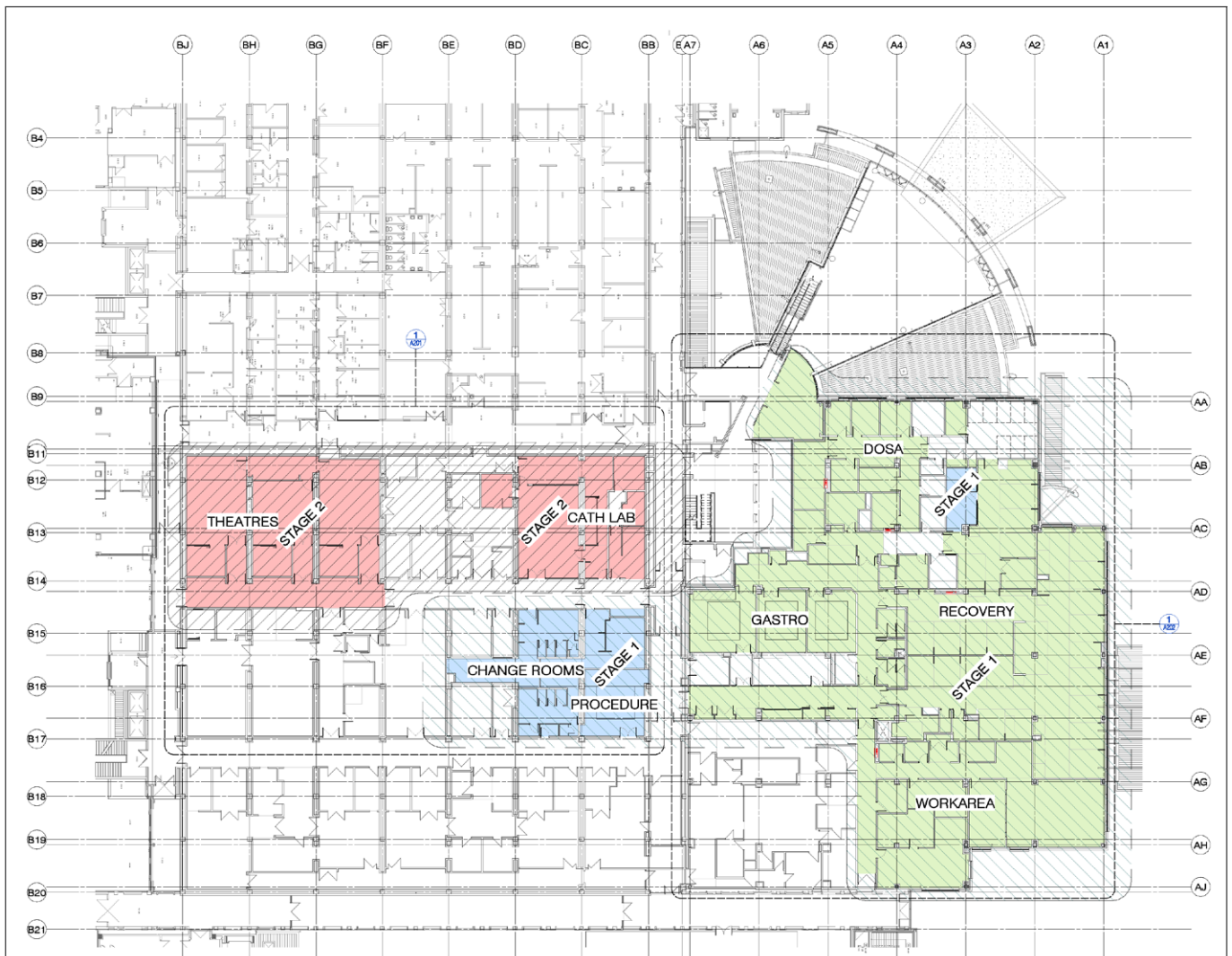
**More about SPIRE Stage 1 completion in the next issue.**

## STAGE 1:

- Day of Surgery Admission area.
- Recovery area.
- Gastroenterology suite (including three procedure rooms and a new decontamination unit).
- Theatre change rooms.
- Staff area.

## STAGE 2:

- Two additional theatres.
- An interventional cardiac cath lab.
- Procedure Room 4 (within theatre suite).





*Nurses' station.*



*The final checks before go-live.*



*SPIRE's stage 2 is now underway with the demolition of the old DOSA area.  
More about this in the next edition.*

## ACUTE MENTAL HEALTH UNIT

Site works will soon begin for our new acute mental health unit.

Trees on the site were recently cleared. Next, a separate entrance to the construction site will be established to accommodate the construction traffic, with a staging lane on Heretaunga Street. The contractor, L T McGuinness will work to a traffic management plan agreed with the Palmerston North City Council and will have parking on site. This arrangement has been used for other building works we are undertaking on the Ruahine Street side of the campus and has proven to work well. The construction site will be fenced off and a CCTV system installed.

The construction site will in time displace both staff and patient car parks and arrangements are being made for these to be accommodated elsewhere on the campus.



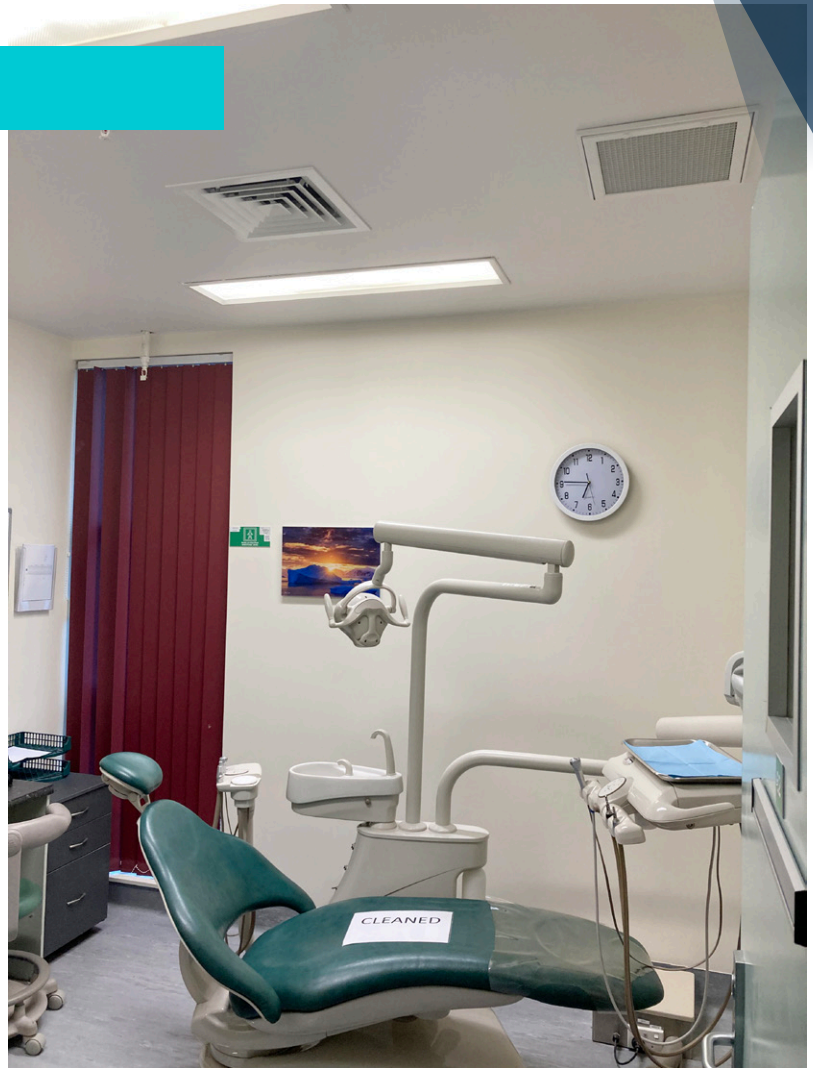
## BEHIND THE SCENES

### COVID-19 PREPAREDNESS

COVID-19 presents a significant risk for our **dental services** as an airborne infection due to the high aerosol generation created when using high speed drills.

To remedy this and mitigate the risk as much as is practically possible, several HEPA (high-efficiency particulate air) filters have been installed in the Dental Suite in the Ambulatory Care Centre, together with new doors. This means the Unit is now airlocked, has clean fresh air which is changed 12 times per hour.

Ward 26 is now to be refitted from an engineering perspective so it can be a COVID-19 treatment ward, similar to Ward 24. This work will commence in February and is expected to take up to eight weeks to complete.



#### Te Whatu Ora

Health New Zealand

Te Pae Hauora o Ruahine o Tararua  
MidCentral

*“Our Place” keeps you informed of the strategic projects, interim solutions and the supporting infrastructure work being progressed to ensure Palmerston North Hospital is able to meet current and future demand.*

#### Strategic

- Acute Services Block
- Reconfiguration of Clinical Services Block
- Mental Health Acute Facility
- Regional Cancer Facilities

#### Interim

- SPIRE Project (Surgical and Peri-operative Capacity)
- ED and Acute Assessment Capacity (ED, EDOA & MAPU)
- ICU and Acute Care Capacity

#### InfraStructure

- Electrical, heating, ventilation
- Three waters
- Medical gases
- Fire systems
- Thermal and emergency generation systems

*For more information on our capital projects at the hospital go to our new website [www.projects.mdhb.health.nz](http://www.projects.mdhb.health.nz) or by scanning the QR code.*



Questions, feedback, thoughts – send them to [ourplace@midcentraldhb.govt.nz](mailto:ourplace@midcentraldhb.govt.nz)