

Our Place | Ahu Taumatua

THE REDEVELOPMENT OF PALMERSTON NORTH HOSPITAL

ISSUE 33 | FEBRUARY 2023

ACHIEVEMENTS

SPIRE Stage 1 is completed and operational.

Work on SPIRE Stage 2 is underway and will deliver an additional two theatres, a fourth procedure room, and our first interventional cardiac cath lab.

Construction of our new Acute Mental Health Unit is near, with enabling works now occurring on site.

Our new MAPU/EDOA facility was officially opened on 17 February 2022 by Tangi Utikere, MP for Palmerston North.



SPIRE Stage 1 completed



Ground work begins for our new Acute Mental Health Unit

WHAKATAUKĪ

Kua hua te marama
The moon is full

This indicates that something has completed a full cycle or reached maturity.

Source: *Ngā Pepeha a ngā Tipuna.*

SPIRE

STAGE 1

- Expanded Gastroenterology Department, including three procedure rooms and a new decontamination unit
- Expanded DOSA
- Expanded Recovery
- Expanded theatre change rooms
- New staff area (offices, meeting room, staff room etc).







Yahoo – Stage 1 is now complete. The new Day of Surgery Unit, Recovery Unit, Gastroenterology Suite and staff area are in use.







Stage 1 also involved work within the theatre suite itself to upgrade the staff change rooms.

It was originally envisaged that the four procedure rooms would be completed, however the fourth room (which is in the theatre suite) will be done as part of the second stage.

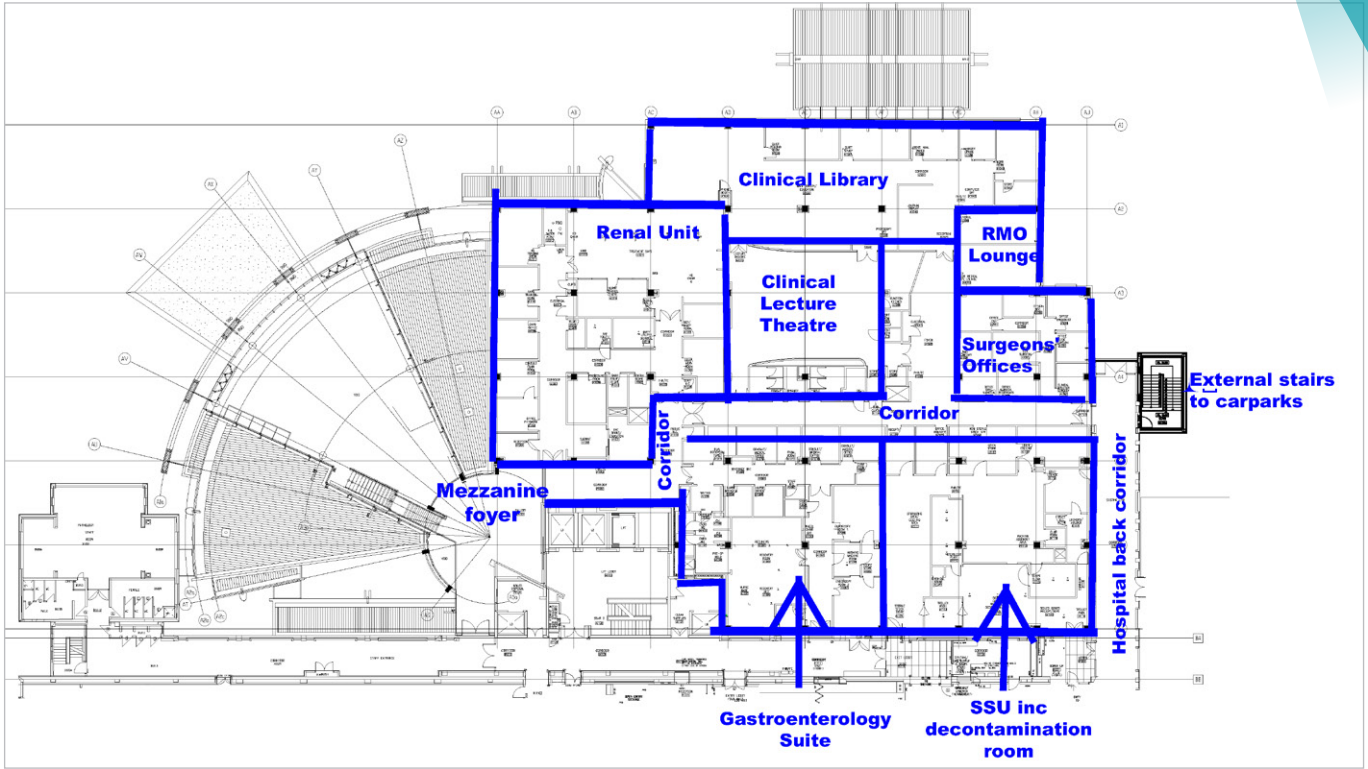
Word in the corridors is that staff are enjoying their new facilities. We've got some photos so you can see what has been achieved.

MAJOR MILESTONES

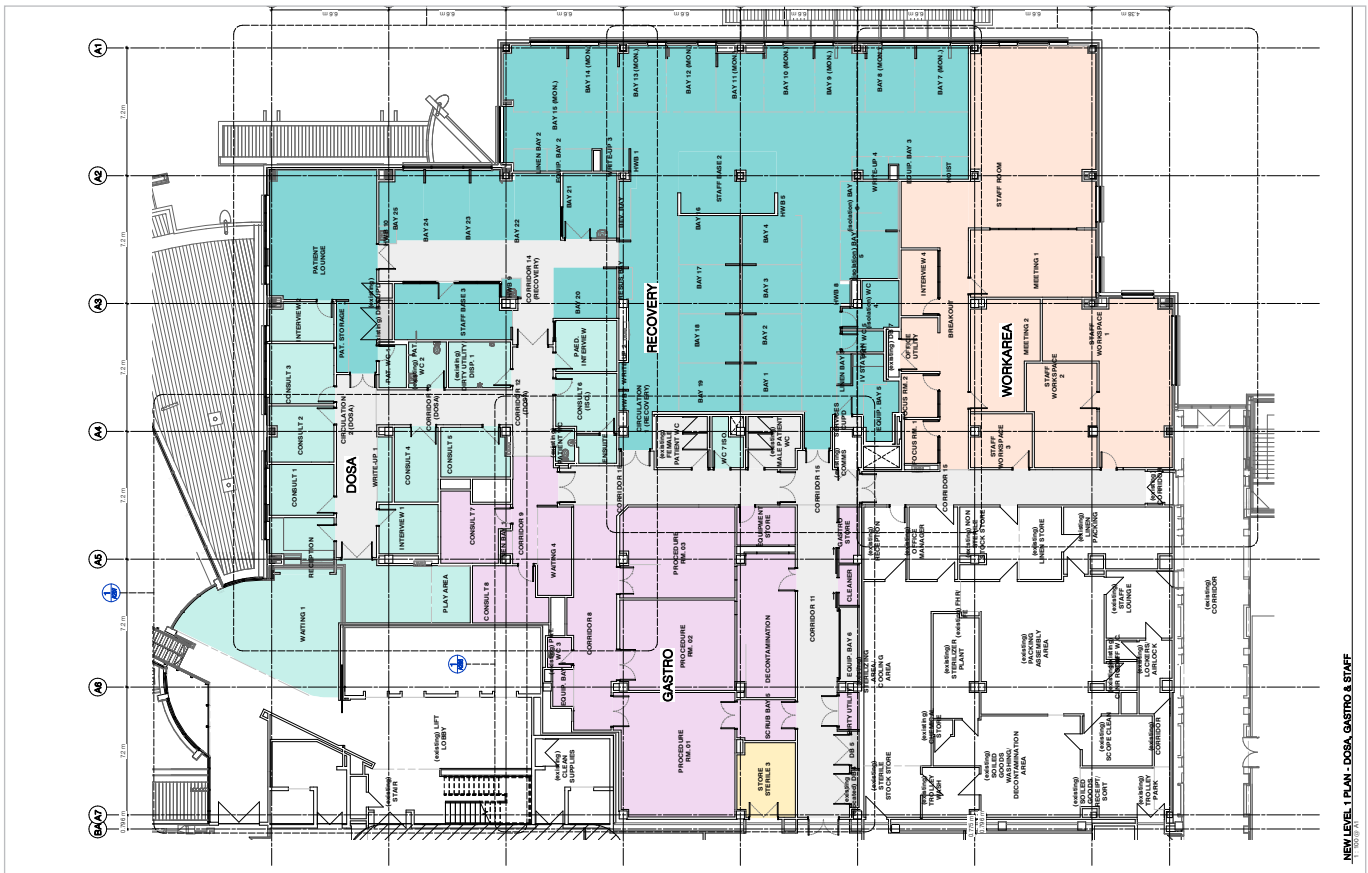
2020			2021		
JANUARY	APRIL	AUGUST	JULY	SEPTEMBER	OCTOBER
 SPIRE project commenced	 SPIRE business case approved by Board	 SPIRE business case approved by Minister of Health	 Stage 1 developed design completed	 Stage 1 detailed design completed	 Parea for Stage 1 area Stage 1 construction commenced

2022				2023	
FEBRUARY	JULY	SEPTEMBER	DECEMBER	JANUARY	FEBRUARY
 Theatre change rooms completed	 New Endoscopy decontamination suite completed	 Procedure Room 1 (of 3) completed	 Blessing of Stage 1	 New Day of Surgery Unit go live Gastroenterology Suite go live	 New Recovery area go live Peri-operative staff areas in use

BEFORE

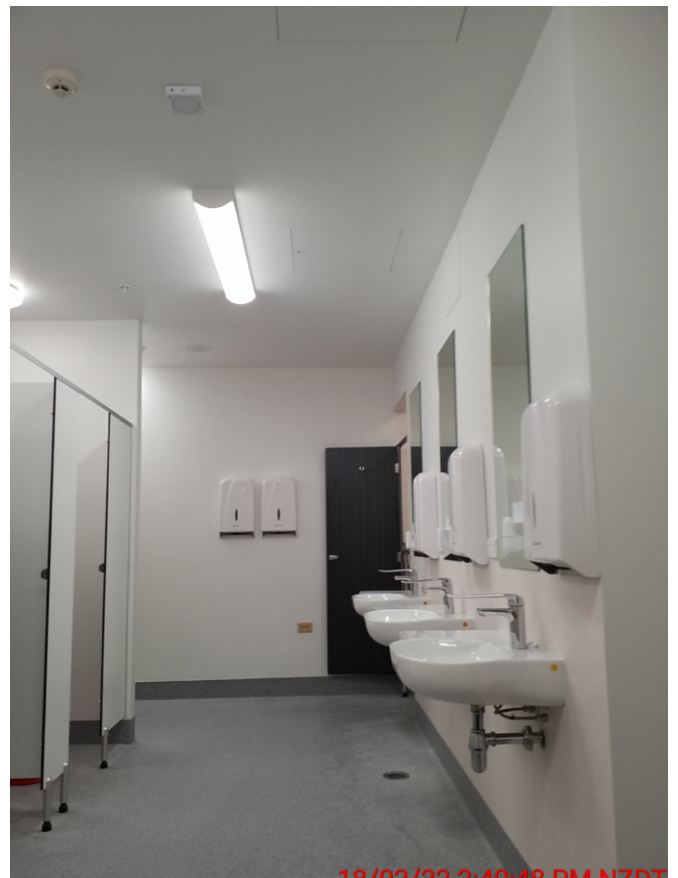


NOW



NEW LEVEL 1 PLAN - DOSA, GASTRO & STAFF

THEATRE CHANGE ROOMS



Theatre change rooms

NEW DECONTAMINATION ROOM



PROCEDURE ROOM 3



DAY OF SURGERY AREA



RECOVERY AREA



GASTROENTEROLOGY AREA



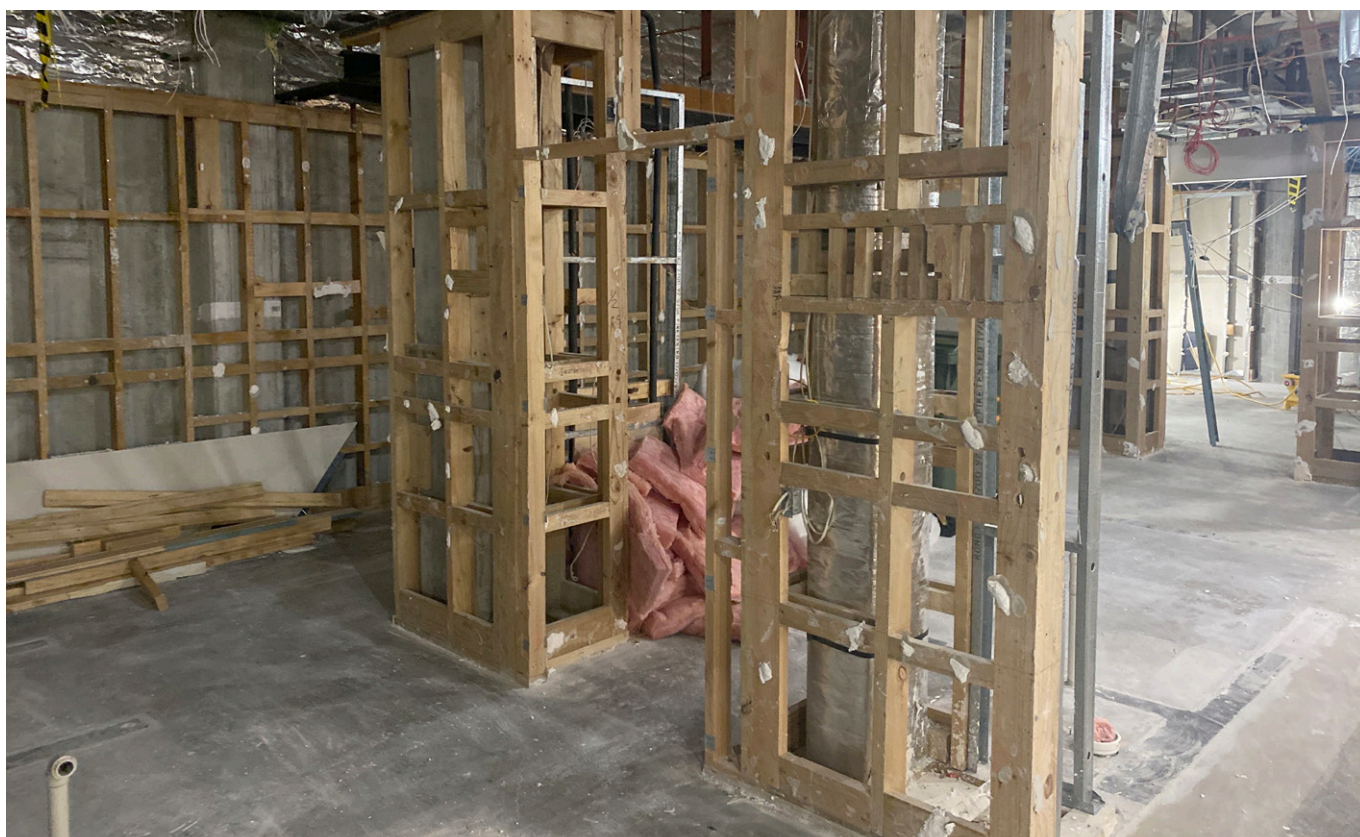
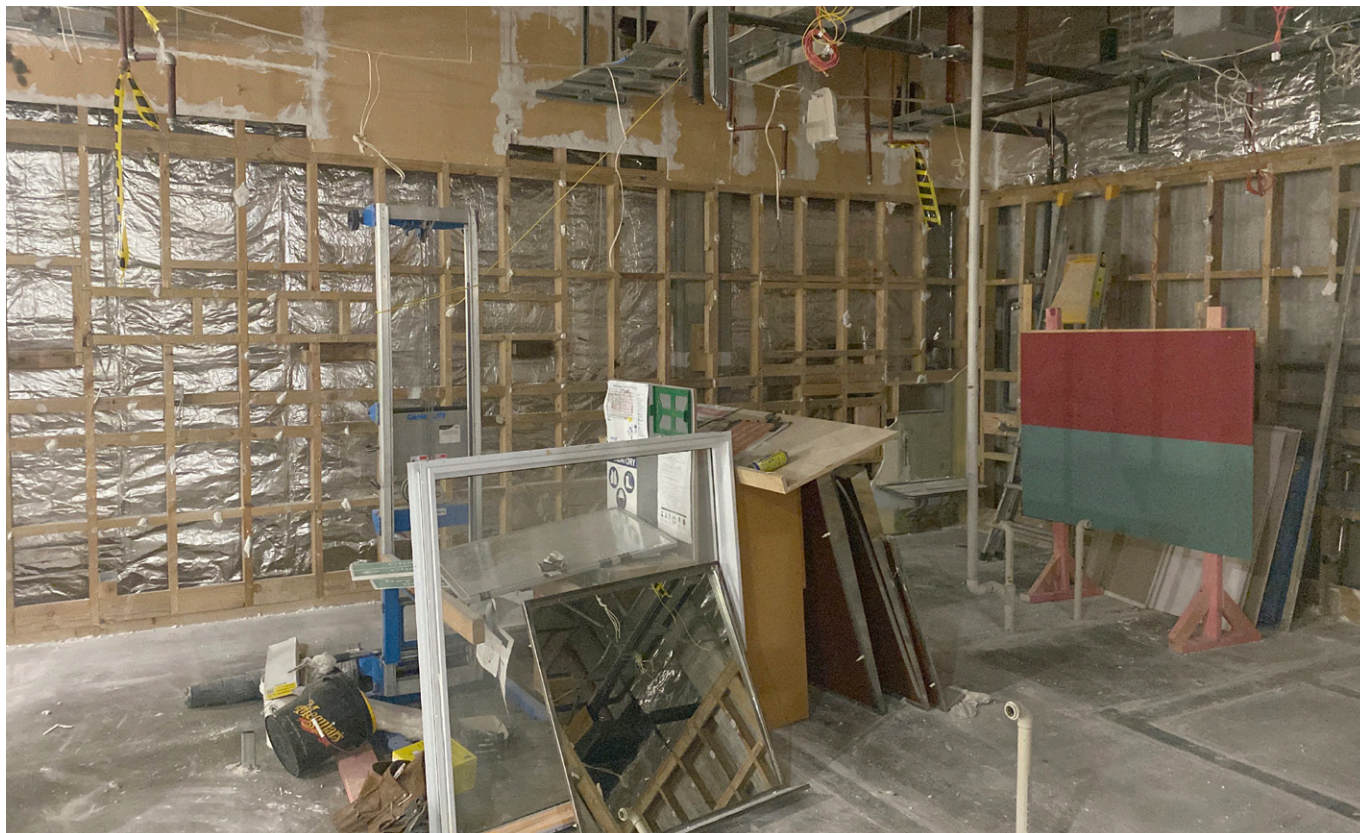
PERI-OPERATIVE STAFF AREA



SPIRE STAGE 2

- One interventional cardiac cath lab – the first for our district.
- Two additional theatres.

Demolition works are almost complete.



ROOF

Work to remove asbestos from the roof and get this area ready for the plant room is progressing well. It is being done in two stages and stage 1 is now complete and all material removed off site safely. Stage 2 is now underway following the re-siting of the tents so that the work can be done in a secure environment. One tent is erected inside another and has negative pressure, and was then smoke tested to confirm encapsulation.



Tent re-sited for Stage 2



Waste material removed is double-bagged and stored in secure compartment awaiting planned removal off site

ACUTE MENTAL HEALTH UNIT

LT McGuinness are now on site and the enabling works are well underway. These will be completed mid March and then work on the foundation will begin. This will involve excavation grading and levelling. Then work will begin on trenches, etc for the installation of utilities, such as plumbing, electrical and mechanical.



INTENSIVE CARE UNIT

Plans for the upgrade of our ICU are underway to address key issues being increasing the number of beds from six to eight, improving lines of sight for clinical staff, and improving storage areas. The beds will be flexible, able to be used as both ICU and HDU as required. Requirements for managing airborne disease, such as COVID-19, will also be taken into account.

Expanding the clinical areas within the ICU has been made by relocating the Anaesthetic Department to the cluster hub area behind the hospital's kitchen.

MAPU AND EDOA FACILITY

Our new MAPU and EDOA facility was opened by the MP for Palmerston North Tangi Utikere. He said he was acutely aware of the pressures on health services, and he was delighted to see the facilities such as this that would make it easier for high-calibre health professionals to deliver excellent care.

MP Tangi Utikere and a small group of dignitaries were shown through the unit by Dr Jeff Brown, Dr Jason Prior and MAPU Charge Nurse Debbie Perry. Other guests took a virtual tour hosted by Dr Prior and Operations Executive Lyn Horgan.



From left to right: Debbie Perry, PN City Councillor William Woods, Dr Jeff Brown, Dr Jason Prior and PN City Councillor Orphee Mickalad



COVID-19 PREPAREDNESS

The re-fitting of Ward 26 so it can be a COVID-19 treatment ward is underway.

This involves the installation of high volume air scrubbing systems throughout the ward, with smaller units being put in place at each bedside. These will clean and direct the flow of air which is critical in responding to air borne viruses such as COVID-19. They help minimise the risk of transmission from infectious patients as much as possible.

In addition to the air scrubbing systems, a negative pressure zone is being created at the ward's main entrance and a second set of double doors to prevent the spread of air borne viruses outside the ward.

The Acute & Elective Specialist Services Operations Executive, Lyn Horgan said these arrangements were established in Ward 24 and helped us manage through the COVID-19 surge.

"Having another ward set up in the same way provides us greater flexibility to respond to COVID-19 and similar viruses. The air filtration systems are set up in such a way that we can utilise the whole ward or sections of it to match demand.

"Our hospital was built at a time when windows provided the ventilation. This doesn't work for infectious diseases of this nature. Planning for the new acute services block and the re-living of our Clinical Services Block will take a very different approach."





Te Whatu Ora

Health New Zealand

Te Pae Hauora o Ruahine o Tararua
MidCentral

“Our Place” keeps you informed of the strategic projects, interim solutions and the supporting infrastructure work being progressed to ensure Palmerston North Hospital is able to meet current and future demand.

Strategic

- Acute Services Block
- Reconfiguration of Clinical Services Block
- Mental Health Acute Facility
- Regional Cancer Facilities

Interim

- SPIRE Project (Surgical and Peri-operative Capacity)
- ED and Acute Assessment Capacity (ED, EDOA & MAPU)
- ICU and Acute Care Capacity

InfraStructure

- Electrical, heating, ventilation
- Three waters
- Medical gases
- Fire systems
- Thermal and emergency generation systems

For more information on our capital projects at the hospital go to our new website www.projects.mdhb.health.nz or by scanning the QR code.



Questions, feedback, thoughts – send them to ourplace@midcentraldhb.govt.nz